

HIGHWAY CAPACITY MANUAL 2010 UNSIGNALIZED INTERSECTIONS

Lee Rodegerdts, P.E.
Kittelson & Associates, Inc.

 TRANSPORTATION RESEARCH BOARD



Housekeeping

- All participant phone lines are muted to avoid distractions during presentations.
- Questions can be asked via the Question Pod/Chat Pod.
- Questions & answer session at the end of the presentation or at specific time during the presentation.
- Citrix /Go-To-Webinar Customer Service: 1-800-263-6317. Select Go-to-Webinar (#2) Technical Support for login assistance or help during the Webinar.

Earn Course Credit

Successful completion of this Web briefing includes:

- Verification of attendance
- Completion of course evaluation

These requirements must be met to earn 1.5 PDH or .2 IACET CEU per course.

At the conclusion of the course you will receive an email with directions to the [online course evaluation](#)

Instructor

Lee Rodegerdts, P.E.

Associate Engineer

Kittelson & Associates, Inc.

lrodegerdts@kittelson.com



Learning Objectives

5

Attendee should be able to:

- Describe changes made to the unsignalized methodologies (TWSC, AWSC, and roundabouts).
- Discuss the new roundabout methodologies and applicable applications.

Webinar Objectives

6

- Learn about where information on unsignalized intersections can be found in the HCM 2010
- Learn what is new with each of the unsignalized procedures
- Learn background on the development of the new roundabout procedure

Presentation Overview

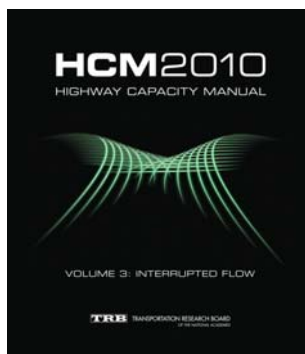
7

- Organization of unsignalized intersection information in HCM 2010
- Two-Way Stop-Controlled (TWSC) Intersections
- All-Way Stop-Controlled (AWSC) Intersections
- Roundabouts

Organization

8

Volume 3: Interrupted Flow



...

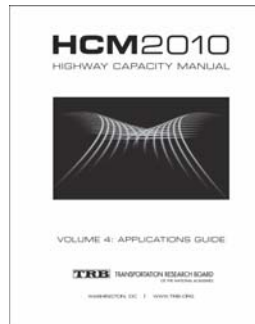
- 19. Two-Way STOP-Controlled (TWSC) Intersections
- 20. All-Way STOP-Controlled (AWSC) Intersections
- 21. Roundabouts

...

Organization (cont.)

9

Volume 4: Applications Guide



...

- 32. Stop-Controlled Intersections: Supplemental
- 33. Roundabouts: Supplemental

...

Technical Reference Library

- Includes research reports from NCHRP Project 3-46, Report 572, etc.

Presentation Overview

10

- Organization of unsignalized intersection information in HCM 2010
- Two-Way Stop-Controlled (TWSC) Intersections
- All-Way Stop-Controlled (AWSC) Intersections
- Roundabouts

TWSC Intersections

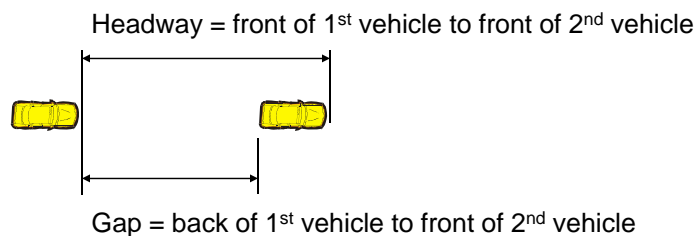
11

- Core method remains same as HCM 2000
- Basic procedure presented in Chapter 19; more detailed adjustments in Chapter 32
- Chapter reorganized to present material in flow chart form rather than worksheets
- Sample problems provided in both Chapters 19 and 32

Terminology

12

- Term “critical gap” is historic but inaccurate in the HCM procedure
- Replaced with “critical headway”



Parameters for 6-Lane Streets

13

□ Critical headway

| Vehicle Movement | Base Critical Headway, $t_{c,base}$ (s) | | |
|--------------------------|---|---|---|
| | Two Lanes | Four Lanes | Six Lanes |
| Left turn from major | 4.1 | 4.1 | 5.3 |
| U-turn from major | N/A | 6.4 (wide) 6.9 (narrow) | 5.6 |
| Right turn from minor | 6.2 | 6.9 | 7.1 |
| Through traffic on minor | 1-stage: 6.5 | 1-stage: 6.5 | 1-stage: 6.5* |
| | 2-stage, Stage I: 5.5 2-stage, Stage II: 5.5 | 2-stage, Stage I: 5.5 2-stage, Stage II: 5.5 | 2-stage, Stage I: 5.5* 2-stage, Stage II: 5.5* |
| Left turn from minor | 1-stage: 7.1 | 1-stage: 7.5 | 1-stage: 6.4 |
| | 2-stage, Stage I: 6.1 2-stage, Stage II: 6.1 | 2-stage, Stage I: 6.5 2-stage, Stage II: 6.5 | 2-stage, Stage I: 7.3 2-stage, Stage II: 6.7 |

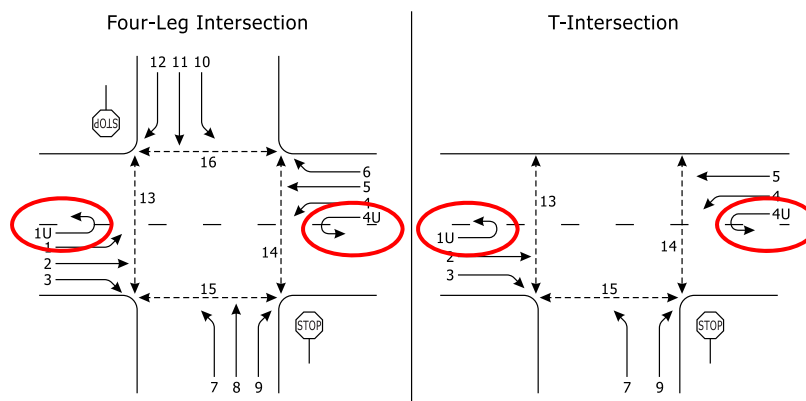
* Use caution; values estimated.

□ Similar table for follow-up headway

Major-Street U-Turns

14

□ Method for 4-lane and 6-lane streets



Upstream Signals

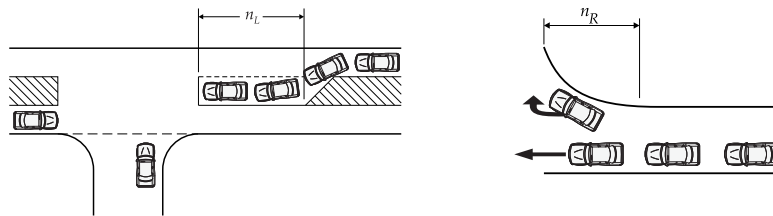
15

- Method now integrated with urban street segment methodology
- Proportion of time blocked by each direction of major street obtained from Chapter 17 method
 - Explicitly accounts for offsets

Shared and Short Lanes

16

- Models updated



Pedestrian Crossing LOS

17

- Considers various types of crossing treatments and associated driver yielding behavior

| Crossing Treatment | Staged Pedestrians | | Unstaged Pedestrians | |
|---|--------------------|--------------------|----------------------|--------------------|
| | Number of Sites | Mean Yield Rate, % | Number of Sites | Mean Yield Rate, % |
| Overhead flashing beacon (push button activation) | 3 | 47 | 4 | 49 |
| Overhead flashing beacon (passive activation) | 3 | 31 | 3 | 67 |
| Pedestrian crossing flags | 6 | 65 | 4 | 74 |
| In-street crossing signs (25–30 mi/h) | 3 | 87 | 3 | 90 |
| High-visibility signs and markings (35 mi/h) | 2 | 17 | 2 | 20 |
| High-visibility signs and markings (25 mi/h) | 1 | 61 | 1 | 91 |
| Rectangular rapid-flash beacon | N/A | N/A | 17 | 81 |

Source: Fitzpatrick et al. (11) and Shurbutt et al. (12).

Presentation Overview

18

- Organization of unsignalized intersection information in HCM 2010
- Two-Way Stop-Controlled (TWSC) Intersections
- All-Way Stop-Controlled (AWSC) Intersections
- Roundabouts

AWSC Intersections

19

- Core method remains same as HCM 2000
- Restructured to improve user understanding
- Sample problems in both Chapters 20 and 32

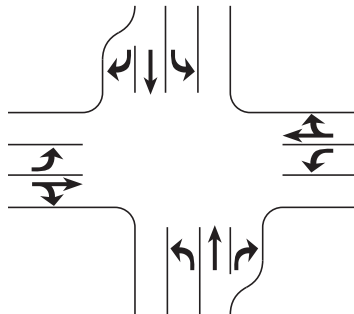


Photo: Lee Rodegerdt

Three-Lane Approaches

20

- Chapter 32 provides details to calculate AWSC operation with three-lane approaches



Queuing Model

21

- Functionally similar to TWSC queuing model

$$Q_{95} \approx \frac{900T}{h_d} \left[(x-1) + \sqrt{(x-1)^2 + \frac{h_d x}{150T}} \right]$$

Presentation Overview

22

- Organization of unsignalized intersection information in HCM 2010
- Two-Way Stop-Controlled (TWSC) Intersections
- All-Way Stop-Controlled (AWSC) Intersections
- Roundabouts

Roundabouts

23

- Research background
- Elements of HCM 2010 procedure

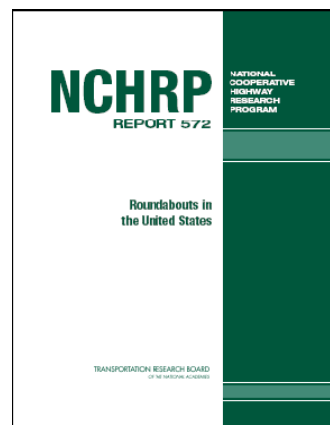


Photo: Casey Bergh

NCHRP Report 572

24

- Most comprehensive study of U.S. roundabout performance to date



NCHRP Report 572 Findings

25

- U.S. capacities lower than observed in other countries
- Capacity clearly sensitive to geometry in the aggregate (number of lanes)
- Secondary effects of geometry on capacity (e.g., lane width, diameter) masked by variations in driver behavior
- Lane-by-lane analysis needed

Why Lower Capacities?

26

- Driver unfamiliarity with roundabouts
- Larger vehicles
- Prevalence of stop control
- Lack of use of turn signals on exits



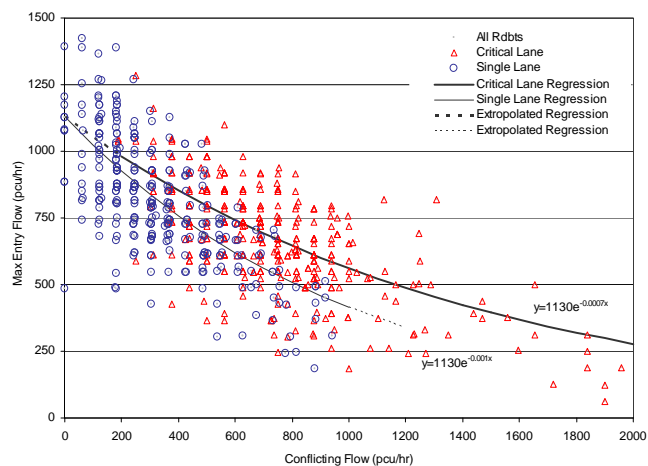
Why Lower Capacities? (cont.)

27

- Trends may change over time or by region
 - Calibration exercises in some areas with high roundabout densities show higher capacities
- Suboptimal geometry affects lane use at multilane roundabouts
 - E.g., Poor path alignment can cause drivers to shy away from using left lane to its fullest

Data Supports Simple Models

28



RMSE (root mean square error) of 140-160 vph

Need for Continuing Research

29

- More roundabouts in operation today (~2000 in 2010 versus ~300 in 2000)
- More multilane roundabouts today
- Longer adaptation period by drivers
- HCM 2010 procedure has calibration tools to allow procedure to be adapted to empirical, local conditions

Roundabouts

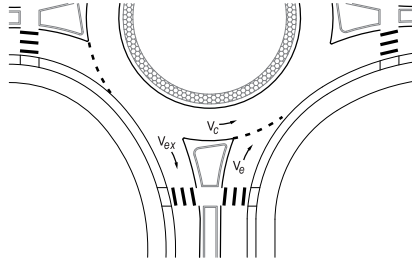
30

- Research background
- Elements of HCM 2010 procedure



Flow Rate Calculations

31



- Calculate flow rates for each entry lane and the conflicting circulatory roadway
- Exit flow rates used for bypass lanes

Flow Rate Adjustments

32

- Use of 15-minute flows or Peak Hour Factor (PHF) adjustments
- Passenger Car Equivalent (PCE) adjustment for heavy vehicles (Note: Different from NCHRP Report 572 method)
 - PCE adjustment for circulating flows applied to determine capacity
 - PCE adjustment for entry flows applied to capacity
 - This retains flow rates in vehicles per hour for delay and queuing calculations

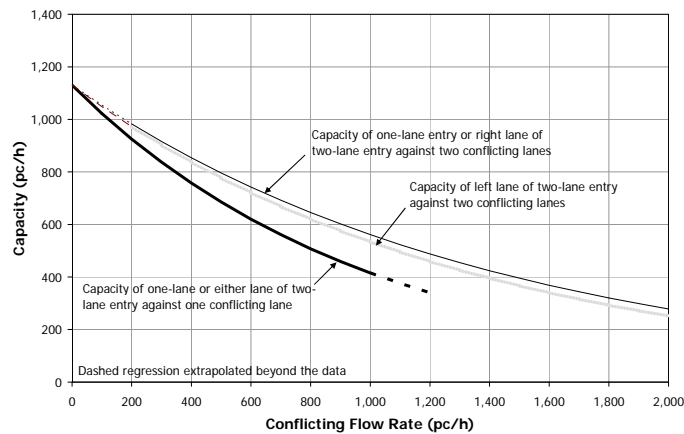
Lane Use Assignment

33

- Volumes in each entry lane are not assumed to be the same (note: different from NCHRP Report 572 method)
- Influenced by several factors
 - Turning movement patterns
 - Designated lane use
 - Geometry (e.g., lane alignment)
 - Driver behavior
- Default values provided – more research needed in this area

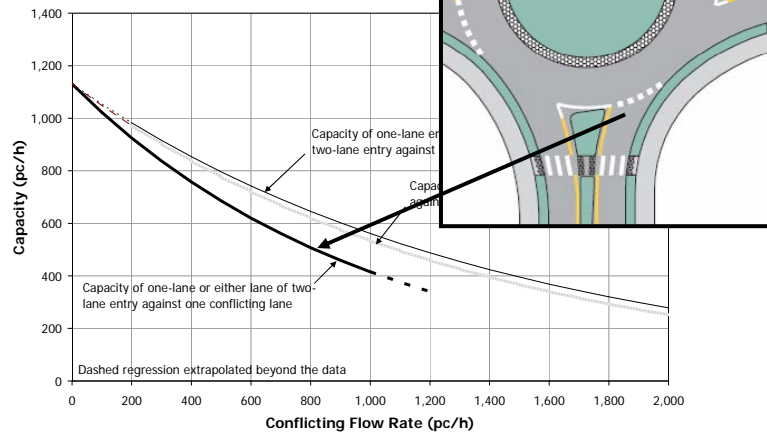
Capacity

34



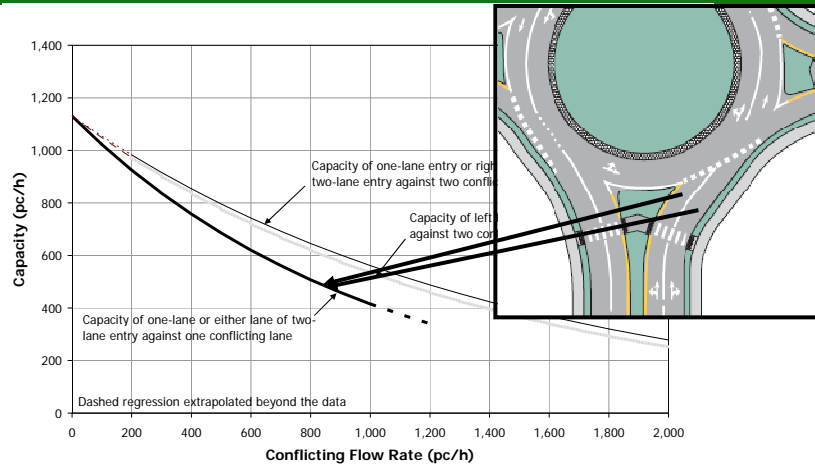
Capacity: 1 lane

35



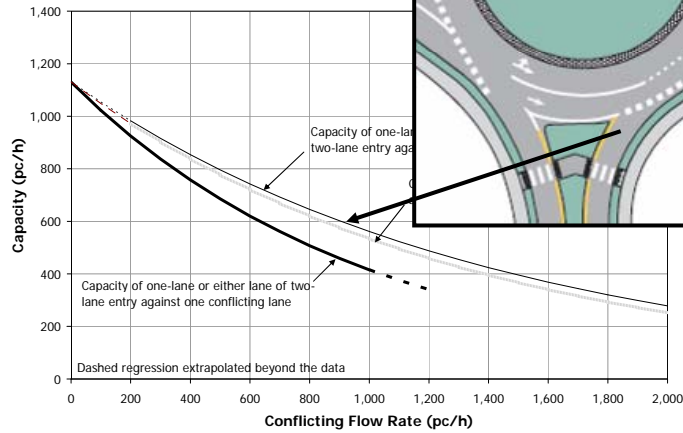
Capacity: 2x1 lane

36



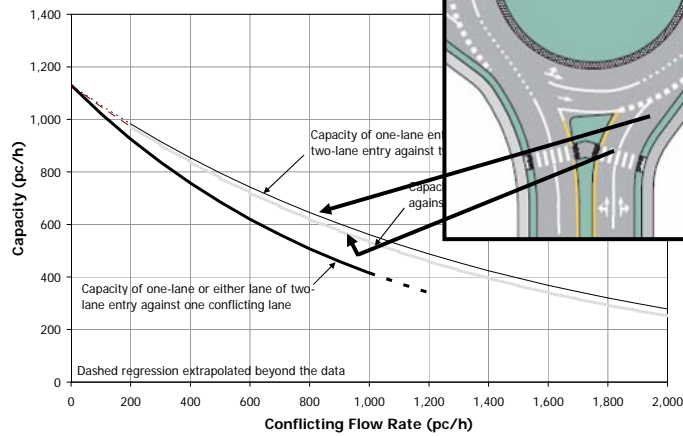
Capacity: 1 x2 lane

37



Capacity: 2x2 lane

38



Notes on Capacity Models

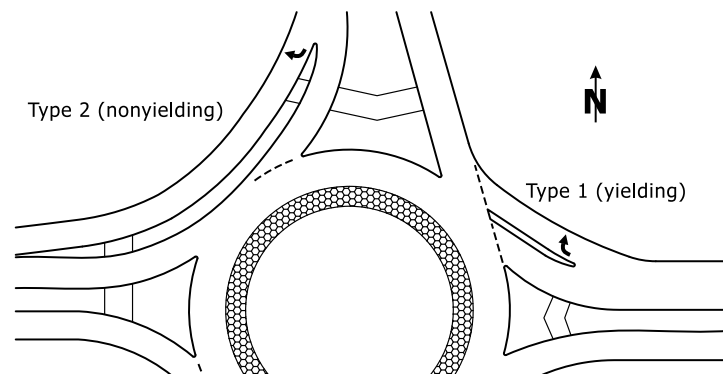
39

- Entry lanes are analyzed separately
- Model does not distinguish between circulating lanes – models as one flow rate
- Larger data set needed to develop more refined model that explicitly accounts for circulatory lane balance
- Some imbalance in circulatory lane flow rates built in due to empirical study of existing sites

Right-Turn Bypass Lanes

40

- Two types recognized



Control Delay

41

- Same as NCHRP Report 572 recommendation except for modification of last term

$$d = \frac{3,600}{c} + 900T \left[x - 1 + \sqrt{(x-1)^2 + \frac{\left(\frac{3,600}{c}\right)x}{450T}} \right] + 5 \times \min[x, 1]$$

- Term added to account for likelihood of stopping at high v/c ratios, not stopping at lower v/c ratios

Control Delay (cont.)

42

- Approach delay

$$d_{\text{approach}} = \frac{d_{LL}v_{LL} + d_{RL}v_{RL} + d_{\text{bypass}}v_{\text{bypass}}}{v_{LL} + v_{RL} + v_{\text{bypass}}}$$

- Intersection delay

$$d_{\text{intersection}} = \frac{\sum d_i v_i}{\sum v_i}$$

95th-Percentile Queue

43

- Queue equation same as TWSC equation

$$Q_{95} = 900T \left[x - 1 + \sqrt{(1-x)^2 + \frac{\left(\frac{3,600}{c}\right)x}{150T}} \right] \left(\frac{c}{3,600}\right)$$

Level of Service

44

- Based on control delay
- LOS assigned to each lane, approach, and intersection
- Delay thresholds same as for TWSC and AWSC intersections
 - Similar delay formulation
 - Drivers must select gaps – no guarantee of service

Level of Service (cont.)

45

- Considerable discussion on this topic
- Committee recognizes that roundabouts are unique and may ultimately need their own thresholds (as may AWSC)
- Research to affirm existing thresholds or support new thresholds desired

Calibration of Capacity

46

- Form of empirical regression model allows for direct calibration to local field conditions

$$c_a = Ae^{(-Bv_c)} \quad A = \frac{3600}{t_f} \quad B = \frac{t_c - (t_f/2)}{3600}$$

- t_c = critical headway
- t_f = follow-up headway

Calibration of Capacity (cont.)

47

| Single-Lane Roundabouts | NCHRP 572 (2003 data) | California (Tian et al, 2006) | Bend, Oregon (KAI, 2009) |
|-------------------------|-----------------------|-------------------------------|--------------------------|
| Critical Headway | 5.1 s | 4.8 s | 4.1 s |
| Follow-up Headway | 3.2 s | 2.5 s | 2.7 s |

- Higher single-lane capacity in these examples
 - Drivers more aggressive than national average?
 - Driver history and familiarity?
 - Use of turn signals? (police enforcement/signing)

Alternative Tools

48

- HCM 2010 explicitly recognizes that HCM procedures are not the only way to analyze problems
- Applicability to roundabouts
 - Geometric configurations not included in model
 - Oversaturated conditions requiring multiple-period analysis
 - Interaction effects with other intersections

Alternative Tools (cont.)

49

- Overview of characteristics of applicable alternative tools for roundabouts
 - Deterministic tools (e.g., ARCADY, RODEL, SIDRA)
 - Simulation (e.g., Paramics, VISSIM)
- Need for calibration to local data (preferred if available) or national averages

Questions?

50

- Please send your additional questions & comments to...
 - Lee Rodegerdts (lrodegerdts@kittelsohn.com)

Thank You

Please provide your feedback. A link to an online evaluation will follow in an e-mail to site registrants. Please distribute this email to participants at your site. The assessment and evaluation will close in one week.

Questions/Comments

Professional Development Department

ITE

1627 I Street, NW, Ste 600

Washington, DC 20006

202-785-0060; pdinfo@ite.org